

Adani Group to build Aussie solar plants

ENS ECONOMIC BUREAU
@ New Delhi

AS a part of a five-year drive to construct 1,500 megawatts of solar energy plants in India, Indian energy giant Adani Group has secured land to build two solar farms in Australia, together valued at \$300 million. The solar push comes even as a court on Friday dismissed appeals against its \$16 billion coal and mine project.

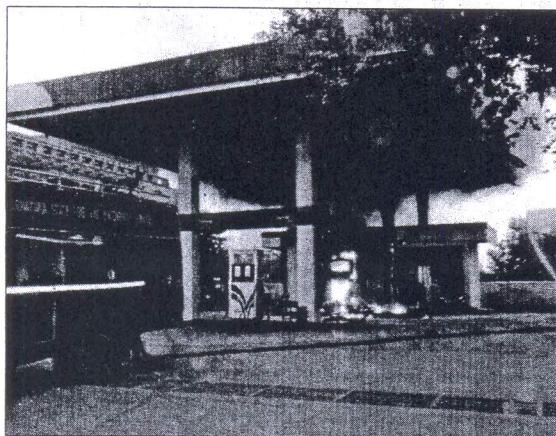
The contraction of Australian \$200 million (\$150 million approximately) each solar farms in south Australia's Whyalla region and in Moranbah in the east of Australia, will begin late next year, the company said. This was one of the towns worst hit by the global slump in coal mining.

The Whyalla project will involve a 120 MW solar generation plant, with potential capacity of up to 150MW, making it one of the largest solar farms in Australia. The company said it has secured a land deal with Whyalla city council for the project.

Jeyakumar Janakaraj, CEO of Australian operations said Adani looked forward to working with the Whyalla community to enhance the South Australian renewable energy industry.

Adani added that the solar projects will be in addition to its investment in the planned Carmichael coal mine and rail and port facilities.

26/11/2016
Fuelling fire page 7



Fire broke out at an HP petrol pump in Sedam town, Kalaburagi district, on Friday when a motorcycle was being refuelled. Electric short circuit is said to be the cause for the fire. Police said that no one was injured, but the fuel dispenser was damaged. Firefighters extinguished the inferno. DH PHOTO

26/11/2016
Page 17
In brief

No power supply

There will be no power supply on Saturday between 9 am and 5 pm due to maintenance works. The areas to be affected are Bommasandra Industrial Area, Vidyanagar, Kachanayakanahalli, Hall Mark Layout, Bangla Pet, Anekal town, Manchanahalli, Jigani industrial area and the surrounding areas.

There will be no power supply between 9 am and 2 pm on November 26 due to maintenance works on the 66/11 KV EPIB Muss. The areas to be affected are Epip Layout industrial area, Prakash Layout, Singaiahapanalya, SJR Tech Park, Sap Labs, ITPL Premises, Sada Tech Park, Airtel HT Installation, Varthur Kodi, Siddapura, Ramagondanahalli and the surrounding areas.

People can call 1912, or SMS on 58888, or can log onto www.bescom.org.

